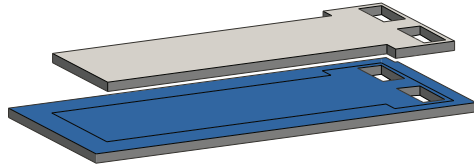


WESTLIGHT ROOFTOP

ROOFTOP
6,855 SQ FT



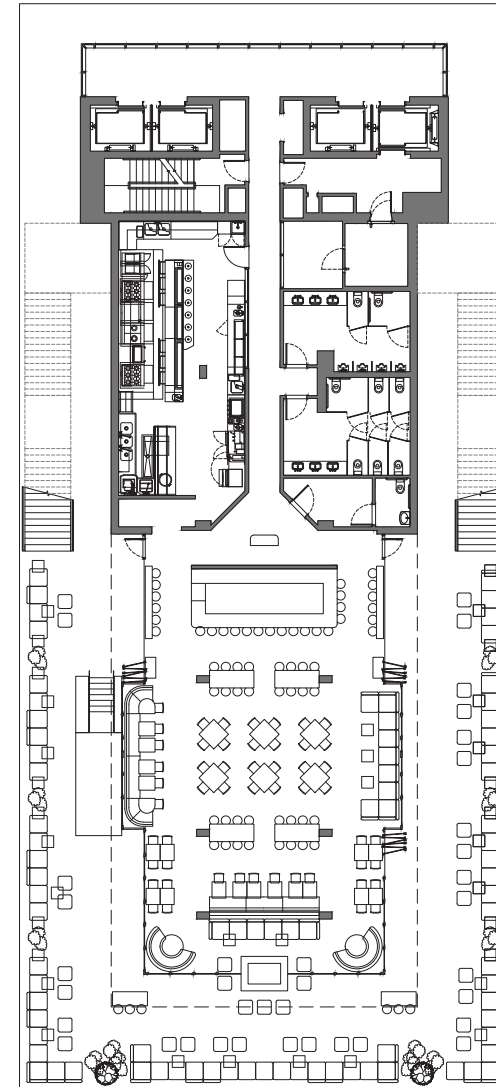
This breathtaking indoor/outdoor area is situated high up on the 23rd floor, providing guests with panoramic views of Brooklyn and Manhattan. Featuring an expansive indoor lounge with floor to ceiling windows, built-in-bar, and wrap-around balcony, The Westlight Rooftop is the perfect venue for receptions, cocktail parties, large dinners, and weddings.

SETTING

Max Capacity

CAPACITY

360



**Suggested seating arrangement for Westlight Rooftop.*

FOR CORPORATE & PRIVATE EVENTS

Mark Speranza
Director of Sales & Marketing
Mark@thewilliamvale.com

FOR PRESS INQUIRIES

Sebastien Maingourd
General Manager
Sebastien@thewilliamvale.com



FOR GROUP INQUIRIES

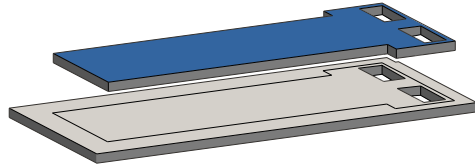
Mark Speranza
Director of Sales & Marketing
Mark@thewilliamvale.com

CONTACT

The William Vale
111 N. 12th St. Brooklyn, NY 11249
info@thewilliamvale.com

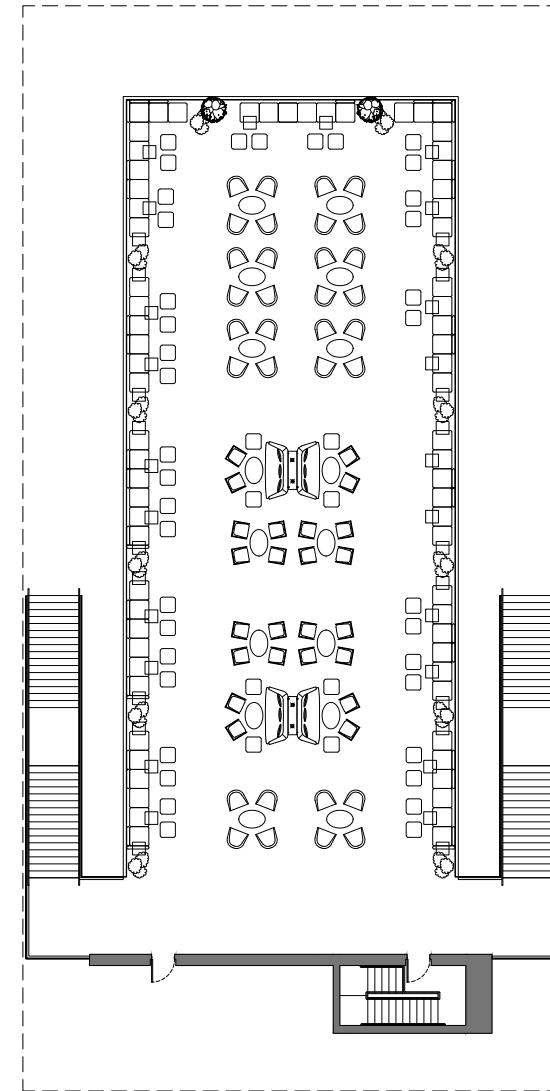
TOP DECK AT THE WESTLIGHT

ROOFTOP
4,840 SQ FT



This spectacular outdoor area is situated atop the hotel on the 23rd floor, providing guests with incredible unobstructed views of Brooklyn and Manhattan. A flexible space, The Westlight Terrace can be arranged in a variety of layouts, perfect for receptions, cocktail parties, large dinners, and weddings.

SETTING	CAPACITY
Max Capacity	300



**Suggested seating arrangement for Top Deck at The Westlight.*

FOR CORPORATE & PRIVATE EVENTS
Mark Speranza
Director of Sales & Marketing
Mark@thewilliamvale.com

FOR PRESS INQUIRIES
Sebastien Maingourd
General Manager
Sebastien@thewilliamvale.com



FOR GROUP INQUIRIES
Mark Speranza
Director of Sales & Marketing
Mark@thewilliamvale.com

CONTACT
The William Vale
111 N. 12th St. Brooklyn, NY 11249
info@thewilliamvale.com